

# WESTERN Interiors & DESIGN

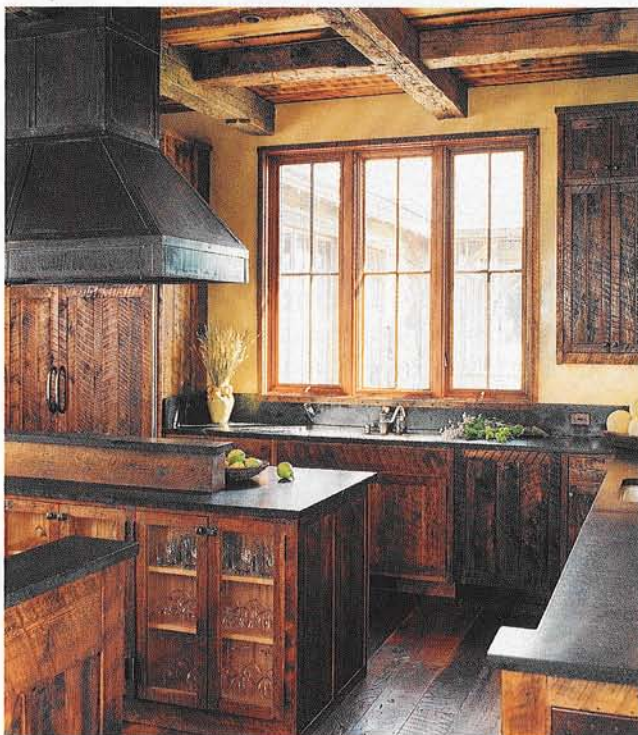
52 *pages of*  
**Inspired Rooms!**

**Texas** Mediterranean Update  
**Los Angeles** Modern Drama  
**Colorado** Rustic Remodel  
**Arizona** Fresh English Style  
**Zen Bath** Makeover

10 **Brilliant Kitchens!**  
**DIANE KEATON**  
on Spanish Houses

**Austin, Texas ▶**  
**Hill Country cool**

“I wanted the materials to be humble but the outcome to be elegant,” says the owner of a kitchen by architect Mell Lawrence. Large windows flood the room with light, and stainless-steel appliances play off the limestone walls. The countertops are custom, as is the steel hood, which hangs above a Dacor stove. The dishwasher drawers are from Fisher & Paykel, and the sink faucet and pot filler are from Chicago Faucets.



◀ **Montana**  
**Rustic note**

Architect Candace Tillotson-Miller underscored a rustic theme by using burnished-fir paneling by Yellowstone Traditions for the cabinets, which encase a Sub-Zero refrigerator and a Bosch dishwasher; the countertops are soapstone. The patinated copper range hood is by TinWorks. “The challenge was to provide a seamless transition from the exterior landscape to the interiors,” says Teresa Scotti, the project’s designer. “All of the colors, materials and finishes chosen are complementary with nature and the historic period of the residence.”

**Scottsdale, Arizona ▶**  
**Desert fresh**

“Using stainless-steel appliances would eat up space visually,” says designer David Michael Miller. “I used enamel jackets on the appliances to make them seem more passive.” Custom cabinets, with leaded glass in the cupboard doors, anchor the bright space. A Rohl farmhouse sink is set in the concrete countertop from Buddy Rhodes Studio. The range is from Viking, and the tile is by Craftsman Court Ceramics. Miller installed pickled white-oak flooring in a herringbone pattern.



CLOCKWISE FROM TOP: GREY CRAWFORD; DOMINIQUE VORILLON; GORDON GREGORY