

# GREAT HOUSES ON A BUDGET

JAMES GRAYSON TRULOVE

# HOUSE AND STUDIO

## Live/Work Texas Style

place: **TEXAS** | architects: **MELL LAWRENCE ARCHITECTS**

photography: **HESTER + HARDAWAY PHOTOGRAPHERS**

### PROJECT DESCRIPTION

A dramatic two story enclosed porch separates a studio for the husband's graphic design business from the main house. Inside the house, the two story volume continues, enclosing an open living, dining, and kitchen area. Large, commercial grade aluminum windows maximize of a creek at the bottom of the sloping site. A 48-foot lpe and steel shelf that doubles as a bench runs underneath these windows for the entire length of the house, connecting the living and dining space with the master bedroom at the eastern end. The kitchen bay was pushed out to allow more natural light and sight-lines to visitors approaching the house. Additional sleeping areas are located on this level as well as in a loft above the living area.

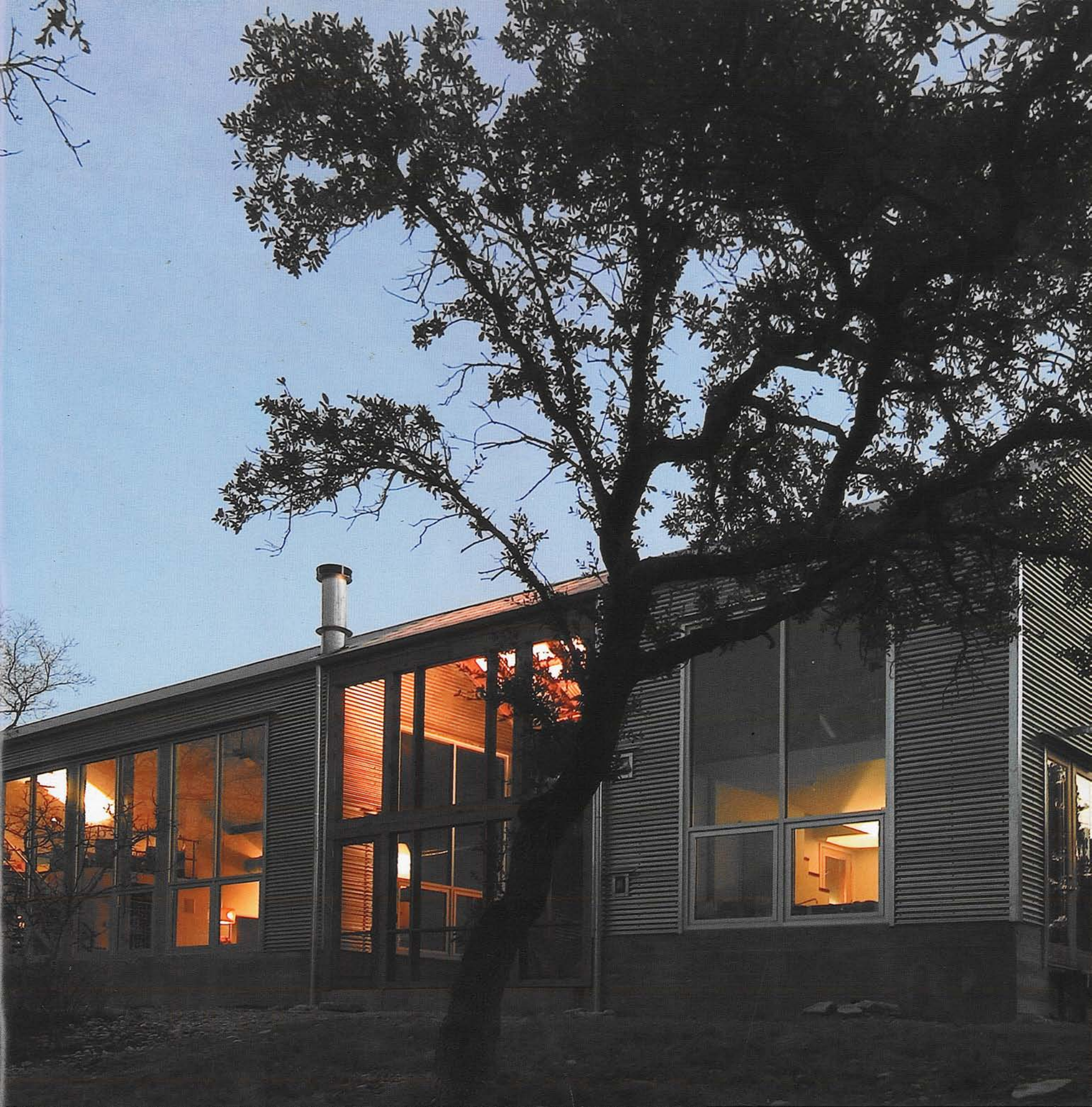
### KEEPING COSTS DOWN

Exterior materials were chosen for cost considerations as well as aesthetics—they reference the rural vernacular architecture of this region. Galvanized corrugated metal was used for siding as well as roofing, creating a dominant, silver-grey palette that both reflects the natural environment and retreats into it. The wood framing of the screened porch warms this palette and connects the house to its woodland landscape.

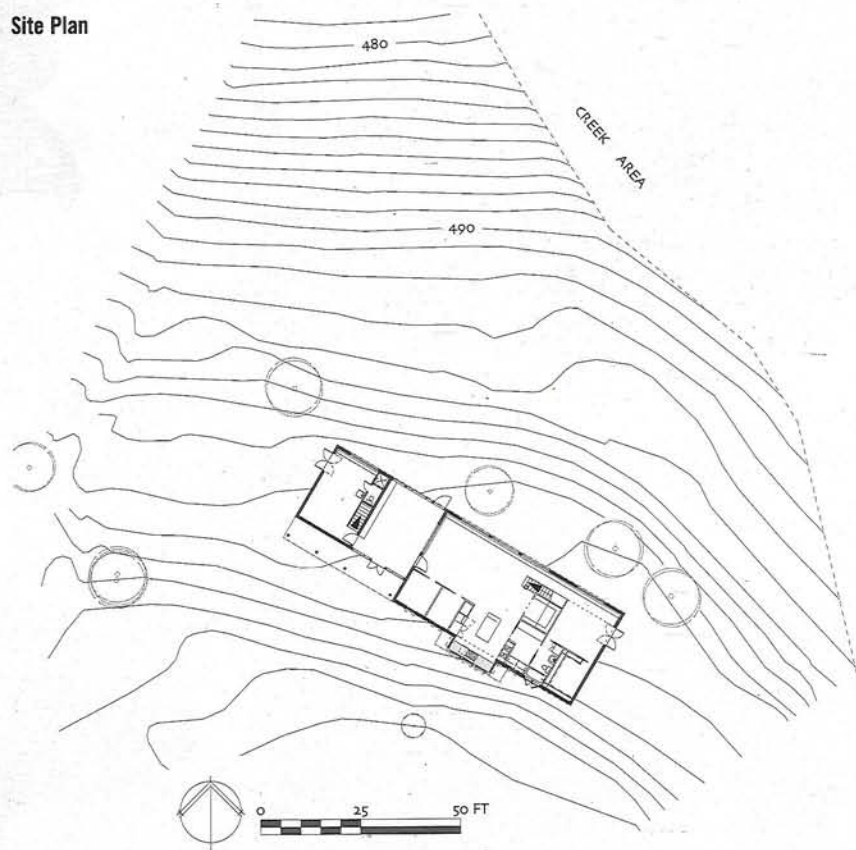
### PRIMARY BUILDING MATERIALS

The exterior of this house is essentially all low-maintenance metal with galvanized corrugated metal roof and siding and aluminum-framed windows. The kitchen features a custom-built lpe, Lueders limestone and steel island, Lueders stone counters and custom built painted medium density fiberboard cabinets. The porch is framed in Douglas fir with exposed Douglas fir beams and an interior support column.

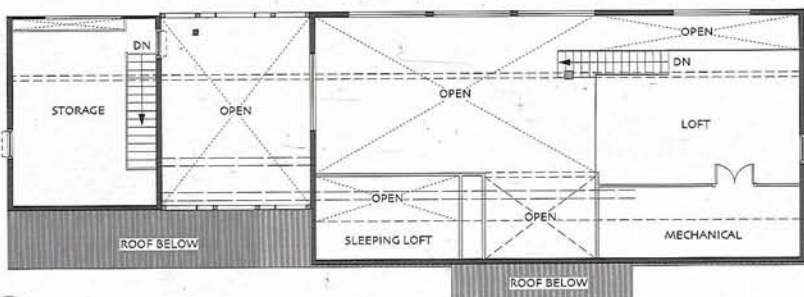




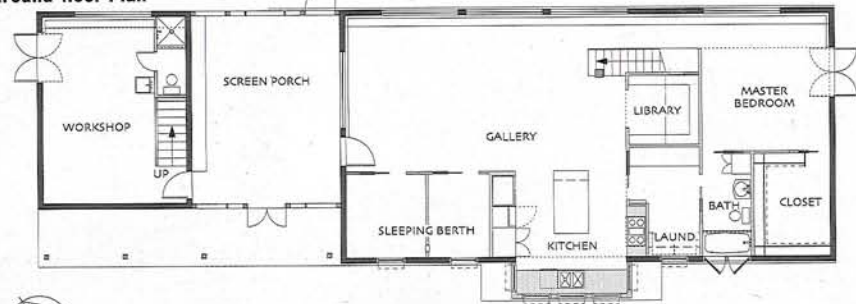
Site Plan



Second-floor Plan



Ground-floor Plan



**Below:** The two story volume of the porch continues into the main house, with a view of the living area.

**Right:** The master bedroom has direct access to the outside.







**Left and Below Left:** A bay was created for the kitchen to bring in more light.

**Right:** The dining area with a view of the loft and the entry beyond the dining table

